



Continuous Trading	19.06 %
Continuous Trading Value	\$ 823,702,880
Total Market	19.80 %
Trade Reporting Value	\$ 607,419,532
Symbols Traded	1,039
Symbols Quoted	1,653

**AVERAGE DAILY VALUES for week 12/05/2017**

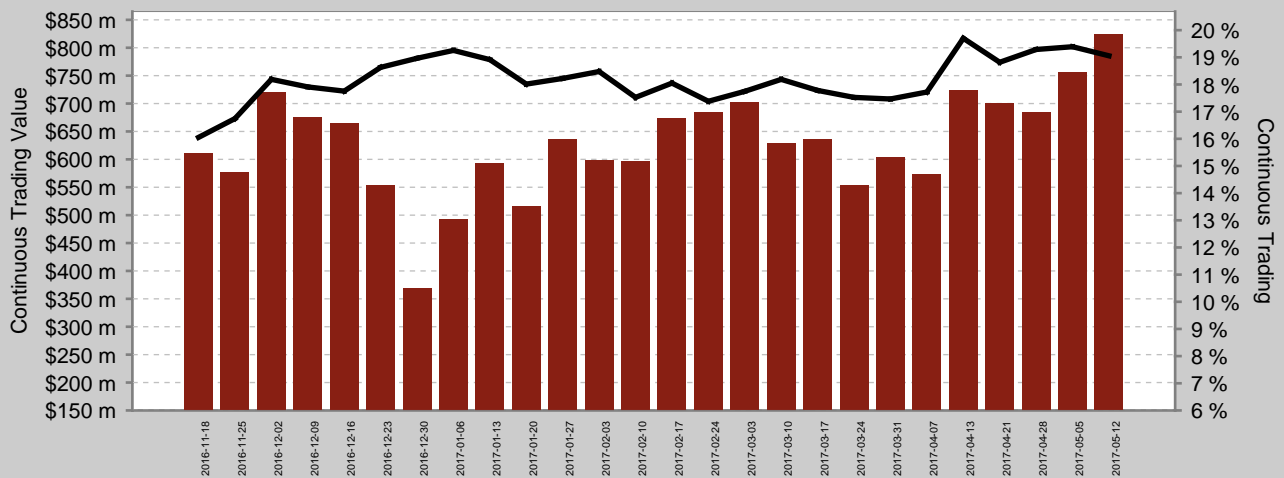
### Mid-Point Trades

% of Trades at Mid-Point	12.35 %
% of Value at Mid-Point	8.59 %

### Price Improvement Trades

% of Trades with PI	15.89 %
Average PI (BPs)	39.75

### Continuous Trading Value And Market Share



### Top Symbols By Continuous Trading (CT) %

Symbol	CT	CT Value	% PI	Avg PI
PLS	50.83 %	\$ 2,434,562	26.69 %	90.45
GXY	42.49 %	\$ 4,459,388	26.04 %	72.15
SGP	31.61 %	\$ 7,399,021	24.48 %	14.45
RSG	30.63 %	\$ 2,412,263	23.52 %	30.46
GPT	30.43 %	\$ 4,784,944	18.20 %	13.41

### Top Symbols By Continuous Trading Value

Symbol	CT Value	CT	% PI	Avg PI
ANZ	\$ 45,723,744	19.27 %	14.16 %	2.59
WBC	\$ 38,800,999	16.55 %	14.50 %	2.24
TLS	\$ 38,335,176	27.87 %	22.40 %	14.83
NAB	\$ 33,569,631	15.09 %	13.79 %	2.40
FMG	\$ 30,474,499	25.90 %	25.74 %	14.10

### Top Symbols At The Mid-Point

Symbol	Mid-Point Value	Trades at Mid	Value at Mid	Symbol	Mid-Point Value	Trades at Mid	Value at Mid
TLS	\$ 5,397,007	19.56 %	14.27 %	ANZ	\$ 3,573,830	8.21 %	8.70 %
WBC	\$ 5,254,290	8.98 %	13.70 %	CTX	\$ 3,040,091	18.74 %	48.25 %
FMG	\$ 5,082,146	19.23 %	16.37 %	CSL	\$ 2,451,454	11.23 %	27.75 %
NAB	\$ 4,746,069	7.55 %	13.15 %	WOW	\$ 2,242,546	3.62 %	17.29 %
CBA	\$ 3,862,154	4.88 %	12.89 %	S32	\$ 1,990,853	21.07 %	11.12 %

All information is for the cash equities stock universe that is published in Chi-X's daily security file (CHIXTSL), which includes stocks, listed managed funds and ETFs but excludes warrants, interest rate securities and derivatives.

Continuous Trading	The average daily value of trades executed on Chi-X during continuous trading, expressed as a percentage of the total value executed during continuous trading on Chi-X and ASX TradeMatch, excluding auctions.	Average PI (BPs)	The average price improvement per trade achieved by Price Improvement Trades, expressed in basis points.
Continuous Trading Value	The average daily value of trades executed on Chi-X during continuous trading.	Mid-Point Value	The average daily value of Mid-Point trades executed on Chi-X.
Total Market	The average daily value of all trades executed on or reported to Chi-X, expressed as a percentage of the total value of all trades executed on or reported to all venues, including Chi-X.	Trades at Mid-Point	The average daily percentage of trades executed on Chi-X during continuous trading that were Mid-Point Trades.
Trade Reporting Value	The average daily value of all transactions that are reported to Chi-X in accordance with the Market Integrity Rules (Competition in Exchange Markets).	Value at Mid-Point	The average daily percentage of value executed on Chi-X during continuous trading from Mid-Point Trades.
Trades with PI / % PI	The average daily percentage of trades executed on Chi-X during continuous trading that were Price Improvement Trades.	Price Improvement Trades	Aggressive trades executed on Chi-X during continuous trading with price improvement relative to the best available ASX bid or offer.

Copyright 2014, Chi-X Australia Pty Ltd (Chi-X) ABN 47 129 584 667. All rights reserved. CHI-X is a registered trademark. Chi-X holds an Australian Market Licence and operates a financial market in Australia. While Chi-X has taken care preparing this document, to the extent permitted by law Chi-X makes no representations or warranties and excludes all liability (including for negligence) in connection with the same. This document is provided for informational purposes only. Under no circumstances is it to be used as a basis for, or considered as an offer to engage in any activity or purchase or sell any security, or as a solicitation or recommendation for the purchase, sale, or offer to purchase or sell any security.