

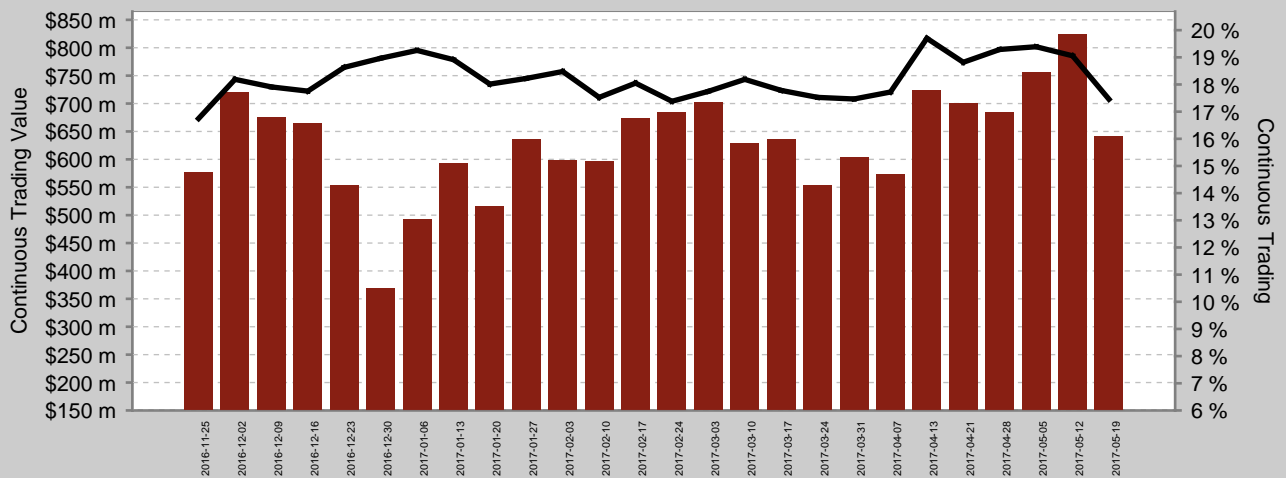


Continuous Trading	17.46 %
Continuous Trading Value	\$ 641,569,796
Total Market	20.22 %
Trade Reporting Value	\$ 631,538,545
Symbols Traded	1,012
Symbols Quoted	1,647

AVERAGE DAILY VALUES for week 19/05/2017

Mid-Point Trades		Price Improvement Trades	
% of Trades at Mid-Point	13.53 %	% of Trades with PI	15.86 %
% of Value at Mid-Point	8.54 %	Average PI (BPs)	39.34

Continuous Trading Value And Market Share



Top Symbols By Continuous Trading (CT) %

Symbol	CT	CT Value	% PI	Avg PI
PLS	41.03 %	\$ 2,264,434	21.28 %	84.94
GXY	39.29 %	\$ 3,352,227	17.25 %	67.43
TLS	30.41 %	\$ 24,057,087	23.83 %	14.67
AMP	29.80 %	\$ 8,831,207	17.85 %	13.61
GMG	28.98 %	\$ 6,924,353	19.47 %	9.02

Top Symbols By Continuous Trading Value

Symbol	CT Value	CT	% PI	Avg PI
ANZ	\$ 25,751,790	18.85 %	25.97 %	2.67
FMG	\$ 25,537,646	24.09 %	19.35 %	14.65
WBC	\$ 25,067,499	14.20 %	14.63 %	2.40
BHP	\$ 24,135,385	19.21 %	18.23 %	3.22
TLS	\$ 24,057,087	30.41 %	23.83 %	14.67

Top Symbols At The Mid-Point

Symbol	Mid-Point Value	Trades at Mid	Value at Mid	Symbol	Mid-Point Value	Trades at Mid	Value at Mid
ANZ	\$ 5,845,352	17.85 %	23.15 %	FMG	\$ 3,178,137	14.35 %	12.33 %
WBC	\$ 4,097,835	7.01 %	14.35 %	RIO	\$ 2,385,305	9.00 %	17.75 %
BHP	\$ 4,002,626	10.11 %	16.19 %	NAB	\$ 1,814,549	5.32 %	8.70 %
WFD	\$ 3,955,541	15.90 %	25.31 %	SCG	\$ 1,769,358	17.75 %	21.18 %
TLS	\$ 3,443,723	21.81 %	14.28 %	CBA	\$ 1,738,501	5.37 %	15.19 %

All information is for the cash equities stock universe that is published in Chi-X's daily security file (CHIXTSL), which includes stocks, listed managed funds and ETFs but excludes warrants, interest rate securities and derivatives.

Continuous Trading	The average daily value of trades executed on Chi-X during continuous trading, expressed as a percentage of the total value executed during continuous trading on Chi-X and ASX TradeMatch, excluding auctions.	Average PI (BPs)	The average price improvement per trade achieved by Price Improvement Trades, expressed in basis points.
Continuous Trading Value	The average daily value of trades executed on Chi-X during continuous trading.	Mid-Point Value	The average daily value of Mid-Point trades executed on Chi-X.
Total Market	The average daily value of all trades executed on or reported to Chi-X, expressed as a percentage of the total value of all trades executed on or reported to all venues, including Chi-X.	Trades at Mid-Point	The average daily percentage of trades executed on Chi-X during continuous trading that were Mid-Point Trades.
Trade Reporting Value	The average daily value of all transactions that are reported to Chi-X in accordance with the Market Integrity Rules (Competition in Exchange Markets).	Value at Mid-Point	The average daily percentage of value executed on Chi-X during continuous trading from Mid-Point Trades.
Trades with PI / % PI	The average daily percentage of trades executed on Chi-X during continuous trading that were Price Improvement Trades.	Price Improvement Trades	Aggressive trades executed on Chi-X during continuous trading with price improvement relative to the best available ASX bid or offer.

Copyright 2014, Chi-X Australia Pty Ltd (Chi-X) ABN 47 129 584 667. All rights reserved. CHI-X is a registered trademark. Chi-X holds an Australian Market Licence and operates a financial market in Australia. While Chi-X has taken care preparing this document, to the extent permitted by law Chi-X makes no representations or warranties and excludes all liability (including for negligence) in connection with the same. This document is provided for informational purposes only. Under no circumstances is it to be used as a basis for, or considered as an offer to engage in any activity or purchase or sell any security, or as a solicitation or recommendation for the purchase, sale, or offer to purchase or sell any security.