



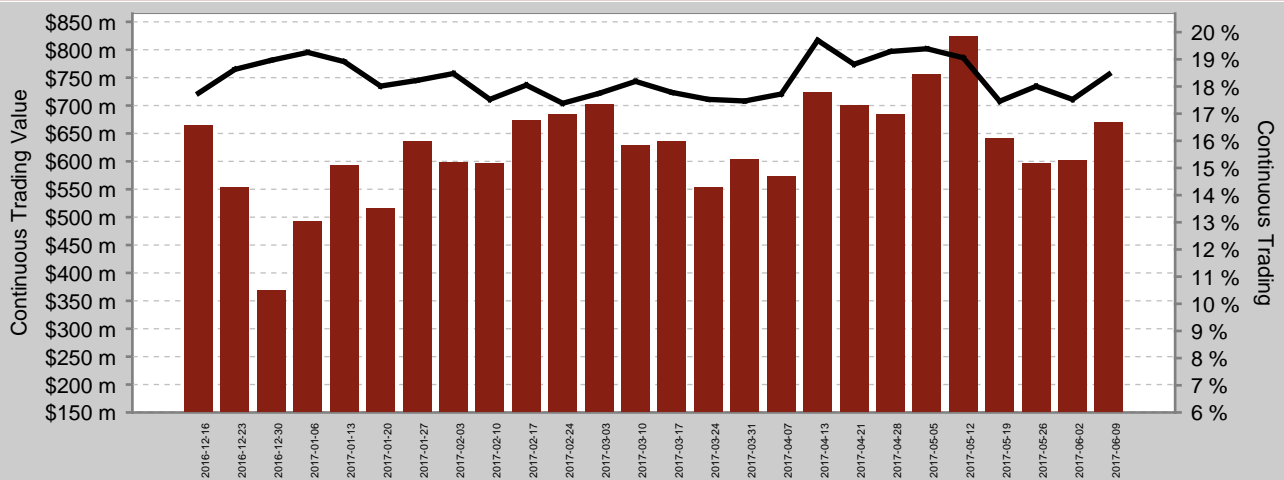
Continuous Trading	18.45 %
Continuous Trading Value	\$ 670,852,748
Total Market	19.75 %
Trade Reporting Value	\$ 545,638,264
Symbols Traded	1,028
Symbols Quoted	1,641

AVERAGE DAILY VALUES for week 9/06/2017

Mid-Point Trades	
% of Trades at Mid-Point	15.30 %
% of Value at Mid-Point	9.61 %

Price Improvement Trades	
% of Trades with PI	16.84 %
Average PI (BPs)	36.55

Continuous Trading Value And Market Share



Top Symbols By Continuous Trading (CT) %

Symbol	CT	CT Value	% PI	Avg PI
GXY	34.37 %	\$ 2,684,724	13.77 %	36.62
MGR	32.94 %	\$ 6,047,275	32.68 %	30.35
TLS	32.72 %	\$ 24,281,294	27.23 %	14.60
AAA	30.73 %	\$ 2,048,308	22.29 %	1.43
AZJ	30.16 %	\$ 6,123,900	13.65 %	13.31

Top Symbols By Continuous Trading Value

Symbol	CT Value	CT	% PI	Avg PI
ANZ	\$ 27,391,163	20.97 %	17.03 %	2.96
WBC	\$ 25,786,584	16.73 %	18.68 %	2.50
TLS	\$ 24,281,294	32.72 %	27.23 %	14.60
BHP	\$ 23,754,454	14.05 %	16.78 %	3.20
FMG	\$ 21,261,884	23.36 %	20.28 %	14.73

Top Symbols At The Mid-Point

Symbol	Mid-Point Value	Trades at Mid	Value at Mid	Symbol	Mid-Point Value	Trades at Mid	Value at Mid
TLS	\$ 5,741,990	24.31 %	23.40 %	CSL	\$ 2,947,880	11.20 %	25.80 %
WBC	\$ 5,492,714	11.42 %	22.93 %	BHP	\$ 2,884,455	9.31 %	11.42 %
ANZ	\$ 4,812,410	8.06 %	18.45 %	FMG	\$ 2,741,946	15.72 %	13.37 %
NAB	\$ 4,266,825	10.36 %	21.87 %	QAN	\$ 1,866,940	14.08 %	20.98 %
CBA	\$ 3,028,506	8.36 %	24.32 %	QBE	\$ 1,656,966	9.74 %	26.29 %

All information is for the cash equities stock universe that is published in Chi-X's daily security file (CHIXTSL), which includes stocks, listed managed funds and ETFs but excludes warrants, interest rate securities and derivatives.

Continuous Trading	The average daily value of trades executed on Chi-X during continuous trading, expressed as a percentage of the total value executed during continuous trading on Chi-X and ASX TradeMatch, excluding auctions.	Average PI (BPs)	The average price improvement per trade achieved by Price Improvement Trades, expressed in basis points.
Continuous Trading Value	The average daily value of trades executed on Chi-X during continuous trading.	Mid-Point Value	The average daily value of Mid-Point trades executed on Chi-X.
Total Market	The average daily value of all trades executed on or reported to Chi-X, expressed as a percentage of the total value of all trades executed on or reported to all venues, including Chi-X.	Trades at Mid-Point	The average daily percentage of trades executed on Chi-X during continuous trading that were Mid-Point Trades.
Trade Reporting Value	The average daily value of all transactions that are reported to Chi-X in accordance with the Market Integrity Rules (Competition in Exchange Markets).	Value at Mid-Point	The average daily percentage of value executed on Chi-X during continuous trading from Mid-Point Trades.
Trades with PI / % PI	The average daily percentage of trades executed on Chi-X during continuous trading that were Price Improvement Trades.	Price Improvement Trades	Aggressive trades executed on Chi-X during continuous trading with price improvement relative to the best available ASX bid or offer.

Copyright 2014, Chi-X Australia Pty Ltd (Chi-X) ABN 47 129 584 667. All rights reserved. CHI-X is a registered trademark. Chi-X holds an Australian Market Licence and operates a financial market in Australia. While Chi-X has taken care preparing this document, to the extent permitted by law Chi-X makes no representations or warranties and excludes all liability (including for negligence) in connection with the same. This document is provided for informational purposes only. Under no circumstances is it to be used as a basis for, or considered as an offer to engage in any activity or purchase or sell any security, or as a solicitation or recommendation for the purchase, sale, or offer to purchase or sell any security.