



Continuous Trading	19.20 %
Continuous Trading Value	\$ 662,360,583
Total Market	19.55 %
Trade Reporting Value	\$ 452,442,120
Symbols Traded	975
Symbols Quoted	1,645

**AVERAGE DAILY VALUES for week 7/07/2017**

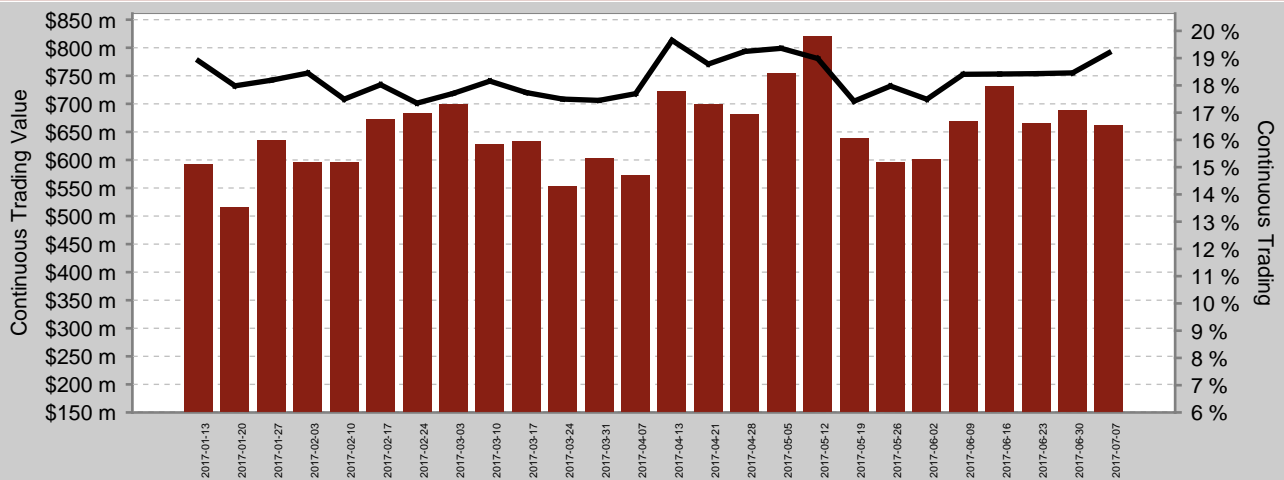
### Mid-Point Trades

% of Trades at Mid-Point	14.05 %
% of Value at Mid-Point	9.28 %

### Price Improvement Trades

% of Trades with PI	18.18 %
Average PI (BPs)	35.73

### Continuous Trading Value And Market Share



### Top Symbols By Continuous Trading (CT) %

Symbol	CT	CT Value	% PI	Avg PI
DLX	32.57 %	\$ 2,163,901	13.85 %	10.02
TLS	31.15 %	\$ 22,445,674	31.67 %	14.15
A2M	30.70 %	\$ 2,570,718	12.11 %	21.18
SCG	30.40 %	\$ 9,225,835	31.75 %	15.68
AOG	30.28 %	\$ 3,272,649	14.99 %	27.87

### Top Symbols By Continuous Trading Value

Symbol	CT Value	CT	% PI	Avg PI
BHP	\$ 31,906,128	18.43 %	17.76 %	3.35
WBC	\$ 23,923,121	16.65 %	16.75 %	2.57
ANZ	\$ 22,547,715	20.68 %	16.89 %	2.91
TLS	\$ 22,445,674	31.15 %	31.67 %	14.15
NAB	\$ 20,770,395	17.63 %	15.22 %	2.82

### Top Symbols At The Mid-Point

Symbol	Mid-Point Value	Trades at Mid	Value at Mid	Symbol	Mid-Point Value	Trades at Mid	Value at Mid
TLS	\$ 5,305,147	29.81 %	23.54 %	IAG	\$ 2,590,442	16.02 %	22.46 %
BHP	\$ 3,968,895	7.77 %	12.02 %	TCL	\$ 2,495,811	17.21 %	22.68 %
SCG	\$ 3,825,585	28.60 %	39.19 %	WFD	\$ 2,369,626	12.91 %	24.84 %
FMG	\$ 3,795,898	17.50 %	20.38 %	ANZ	\$ 2,149,404	6.20 %	9.88 %
WBC	\$ 3,449,873	7.66 %	13.88 %	NAB	\$ 2,026,375	5.48 %	10.09 %

All information is for the cash equities stock universe that is published in Chi-X's daily security file (CHIXTSL), which includes stocks, listed managed funds and ETFs but excludes warrants, interest rate securities and derivatives.

Continuous Trading	The average daily value of trades executed on Chi-X during continuous trading, expressed as a percentage of the total value executed during continuous trading on Chi-X and ASX TradeMatch, excluding auctions.	Average PI (BPs)	The average price improvement per trade achieved by Price Improvement Trades, expressed in basis points.
Continuous Trading Value	The average daily value of trades executed on Chi-X during continuous trading.	Mid-Point Value	The average daily value of Mid-Point trades executed on Chi-X.
Total Market	The average daily value of all trades executed on or reported to Chi-X, expressed as a percentage of the total value of all trades executed on or reported to all venues, including Chi-X.	Trades at Mid-Point	The average daily percentage of trades executed on Chi-X during continuous trading that were Mid-Point Trades.
Trade Reporting Value	The average daily value of all transactions that are reported to Chi-X in accordance with the Market Integrity Rules (Competition in Exchange Markets).	Value at Mid-Point	The average daily percentage of value executed on Chi-X during continuous trading from Mid-Point Trades.
Trades with PI / % PI	The average daily percentage of trades executed on Chi-X during continuous trading that were Price Improvement Trades.	Price Improvement Trades	Aggressive trades executed on Chi-X during continuous trading with price improvement relative to the best available ASX bid or offer.

Copyright 2014, Chi-X Australia Pty Ltd (Chi-X) ABN 47 129 584 667. All rights reserved. CHI-X is a registered trademark. Chi-X holds an Australian Market Licence and operates a financial market in Australia. While Chi-X has taken care preparing this document, to the extent permitted by law Chi-X makes no representations or warranties and excludes all liability (including for negligence) in connection with the same. This document is provided for informational purposes only. Under no circumstances is it to be used as a basis for, or considered as an offer to engage in any activity or purchase or sell any security, or as a solicitation or recommendation for the purchase, sale, or offer to purchase or sell any security.